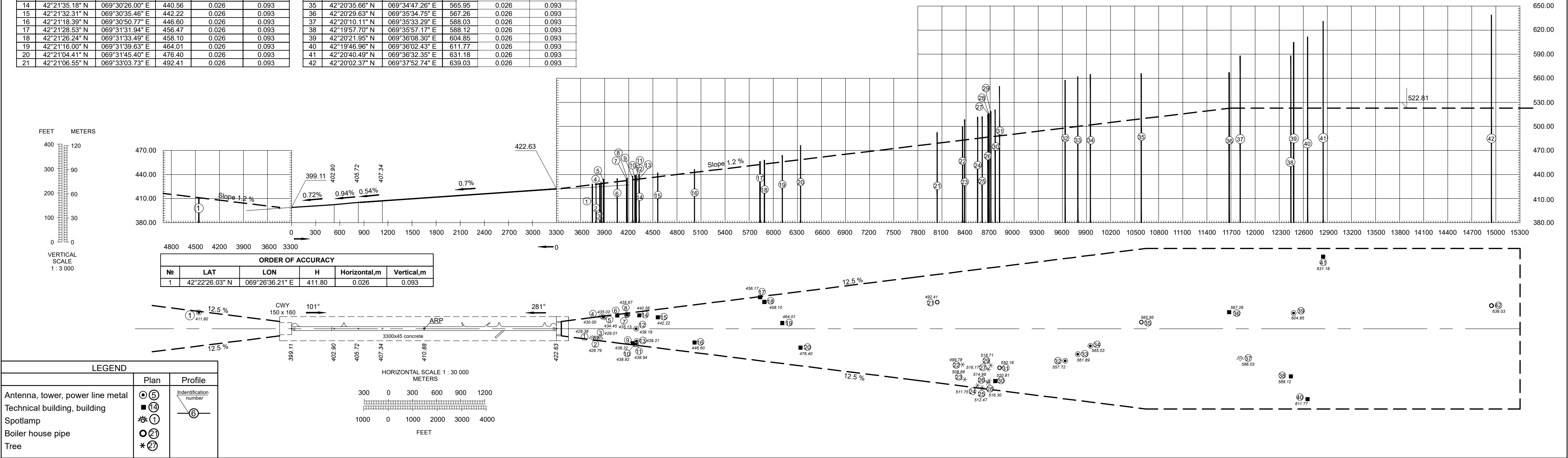


DIMENSIONS AND ELEVATIONS IN METERS MAG VAR 6°E (2013)

ORDER OF ACCURACY					
№	LAT	LON	H	Horizontal,m	Vertical,m
1	42°21'31.37" N	069°29'57.93" E	428.38	0.026	0.093
2	42°21'30.90" N	069°29'59.86" E	428.79	0.026	0.093
3	42°21'30.42" N	069°30'01.76" E	429.01	0.026	0.093
4	42°21'38.62" N	069°30'05.80" E	430.00	0.026	0.093
5	42°21'38.45" N	069°30'07.06" E	434.45	0.026	0.093
6	42°21'37.63" N	069°30'14.53" E	425.02	0.026	0.093
7	42°21'36.79" N	069°30'19.50" E	435.13	0.026	0.093
8	42°21'36.67" N	069°30'19.83" E	435.67	0.026	0.093
9	42°21'25.08" N	069°30'18.35" E	438.22	0.026	0.093
10	42°21'24.50" N	069°30'19.42" E	438.92	0.026	0.093
11	42°21'24.37" N	069°30'19.84" E	438.94	0.026	0.093
12	42°21'30.33" N	069°30'22.44" E	439.19	0.026	0.093
13	42°21'25.49" N	069°30'20.64" E	439.21	0.026	0.093
14	42°21'35.18" N	069°30'26.00" E	440.56	0.026	0.093
15	42°21'32.31" N	069°30'35.46" E	442.22	0.026	0.093
16	42°21'18.39" N	069°30'50.77" E	446.60	0.026	0.093
17	42°21'28.53" N	069°31'31.94" E	456.47	0.026	0.093
18	42°21'26.24" N	069°31'33.49" E	458.10	0.026	0.093
19	42°21'16.00" N	069°31'39.63" E	464.01	0.026	0.093
20	42°21'04.41" N	069°31'45.40" E	476.40	0.026	0.093
21	42°21'06.55" N	069°33'03.73" E	492.41	0.026	0.093

ORDER OF ACCURACY					
№	LAT	LON	H	Horizontal,m	Vertical,m
22	42°20'39.54" N	069°33'07.48" E	499.78	0.026	0.093
23	42°20'33.52" N	069°33'06.31" E	508.99	0.026	0.093
24	42°20'29.75" N	069°33'12.16" E	511.75	0.026	0.093
25	42°20'28.35" N	069°33'14.17" E	512.47	0.026	0.093
26	42°20'29.59" N	069°33'17.86" E	514.99	0.026	0.093
27	42°20'34.74" N	069°33'20.29" E	516.17	0.026	0.093
28	42°20'30.27" N	069°33'18.82" E	516.30	0.026	0.093
29	42°20'35.98" N	069°33'22.12" E	518.71	0.026	0.093
30	42°20'29.41" N	069°33'22.03" E	520.81	0.026	0.093
31	42°20'34.06" N	069°33'26.28" E	550.16	0.026	0.093
32	42°20'29.32" N	069°34'01.64" E	557.72	0.026	0.093
33	42°20'30.48" N	069°34'09.29" E	561.89	0.026	0.093
34	42°20'32.25" N	069°34'17.12" E	565.03	0.026	0.093
35	42°20'35.66" N	069°34'47.26" E	565.95	0.026	0.093
36	42°20'29.63" N	069°35'34.75" E	567.26	0.026	0.093
37	42°20'10.11" N	069°35'33.29" E	588.03	0.026	0.093
38	42°19'57.70" N	069°35'57.17" E	588.12	0.026	0.093
39	42°20'21.95" N	069°36'08.30" E	604.85	0.026	0.093
40	42°19'46.96" N	069°36'02.43" E	611.77	0.026	0.093
41	42°20'40.49" N	069°36'32.35" E	631.18	0.026	0.093
42	42°20'02.37" N	069°37'52.74" E	639.03	0.026	0.093

RWY 10/28 DECLARED DISTANCES		
RWY 10		RWY 28
3300	TAKE – OFF RUN AVAILABLE	3300
3300	TAKE – OFF DISTANCE AVAILABLE	3450
3300	ACCELERATE – STOP DISTANCE AVAILABLE	3300
3300	LANDING DISTANCE AVAILABLE	3160



CHANGE: Obstacle №36 coordinates.

THIS PAGE INTENTIONALLY LEFT BLANK